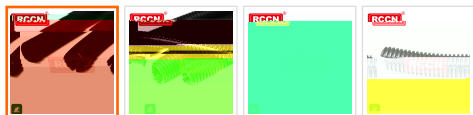
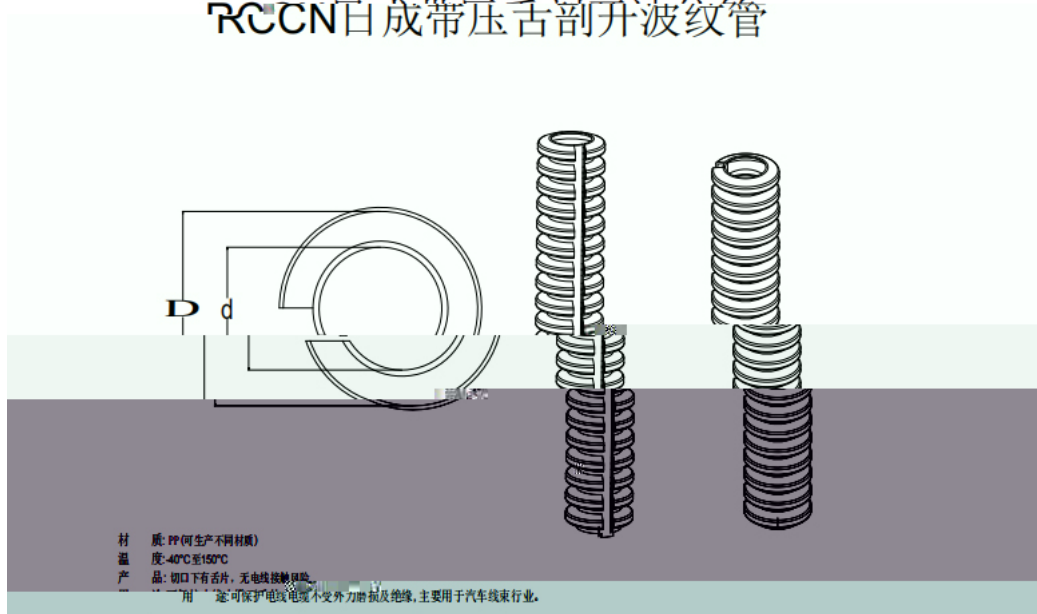


pp

-30°C-110°C



## RCCN白成带压舌剖开波纹管



规格	黑色压舌剖开型	黑色压舌剖开型	壁厚 (mm)	外径 (mm)	内径 (mm)
	BGR-06PPB/T	BGR-06PPB/TV0	6	9.65	6.0
	BGR-09PPB/T	BGR-09PPB/TV0	9	13.40	2.0
	BGR-11PPB/T	BGR-11PPB/TV0	11	16.55	1.5
	BGR-13PPB/T	BGR-13PPB/TV0	13	18.5	1.5
	BGR-16PPB/T	BGR-16PPB/TV0	16	21.50	1.5
70	BGR-19PPB/T	BGR-19PPB/TV0	19	24.15	
50	BGR-23PPB/T	BGR-23PPB/TV0	23	28.75	
	BGR-29PPB/T	BGR-29PPB/TV0	29		5.0



产品应用

