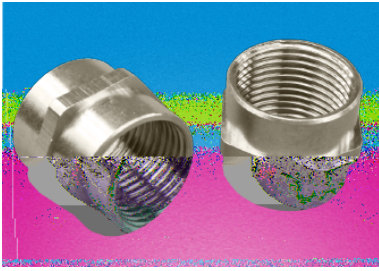


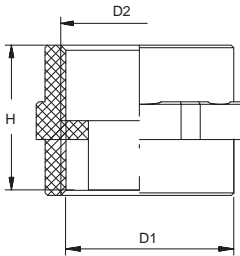
RCCN 日成ICM型金属内螺纹连接头 Inner Connector Fittings

单位/Unit:mm



螺牙规格:公制(Metric),德制PG, 美制NPT
 产品材质:黄铜镀镍
 工作温度:-40°C至100°C,
 瞬间达120°C
 颜色种类:金属色/黄色
 产品特性:双头与外螺纹连接。
 更多选择:可根据需要订制长度
 或不同特殊型号
 例: ICM-M16/M12
 订购型号例:ICM-M20/M20

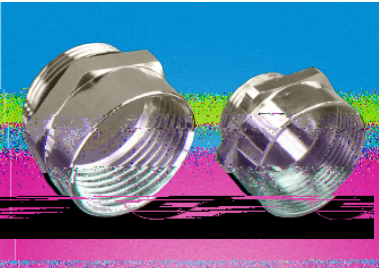
Thread:Metric,PG,NPT
 Material:copper coated nickel
 Operate T.: -40°C to 100°C,
 short time to 120°C
 Colors:silver/yellow
 Features:double connectors
 with thread outside
 More choice:specal length
 can be produced
 such as : ICM-M16/M12
 Order part no.ICM-M20/M20



型号 Item No.	外螺纹 D1	内螺纹 D2	螺纹长度 L	高度 H	宽度 W	包装 Std.Pkg. pcs
ICM-M						
ICM-M12/M12	M12*1.5	M12*1.5	6.0	15	15	10
ICM-M16/M16	M16*1.5	M16*1.5	6.5	16	18	10
ICM-M20/M20	M20*1.5	M20*1.5	7.5	17	24	10
ICM-M25/M25	M25*1.5	M25*1.5	8.0	19	29	10
ICM-M32/M32	M32*1.5	M32*1.5	9.0	21	36	5
ICM-M40/M40	M40*1.5	M40*1.5	10.0	24	44	5
ICM-M50/M50	M50*1.5	M50*1.5	10.0	24	54	5
ICM-P						
ICM-PG7/PG7	PG7	PG7	6.0	15	15	10
ICM-PG9/PG9	PG9	PG9	6.5	15	18	10
ICM-PG11/PG11	PG11	PG11	6.5	16	21	10
ICM-PG13.5/PG13.5	PG13.5	PG13.5	6.5	17	24	10
ICM-PG16/PG16	PG16	PG16	7.5	19	25	10
ICM-PG21/PG21	PG21	PG21	8.0	19	31	5
ICM-PG29/PG29	PG29	PG29	9.0	21	40	5
ICM-PG36/PG36	PG36	PG36	10.0	24	51	5
ICM-PG48/PG48	PG48	PG48	10.0	24	64	5
ICM-N						
ICM-NPT38/NPT38	NPT3/8"	NPT3/8"	6.5	9.0	24	10
ICM-NPT12/NPT12	NPT1/2"	NPT1/2"	7.5	10.0	30	10
ICM-NPT34/NPT34	NTP3/4"	NTP3/4"	8.0	11.5	39	10
ICM-NPT1/NPT1	NPT 1"	NPT 1"	9.0	12.5	50	10

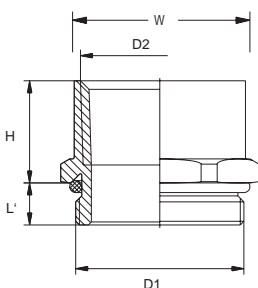
RCCN 日成TCM型金属螺纹转换头 Thread Conversion Fittings

单位/Unit:mm



螺牙规格:公制(Metric),德制PG, 美制NPT
 产品材质:黄铜镀镍
 工作温度:-40°C至100°C,
 瞬间达120°C
 颜色种类:金属色/黄色
 产品特性:不同螺纹之间转换
 更多选择:可根据需要订制长度
 或不同特殊型号
 例: ICM-M16/PG11
 订购型号例:TCM-M16/PG11
 备注:不含螺母,需另订购。

Thread:Metric,PG,NPT
 Material:copper coated nickel
 Operate T.: -40°C to 100°C,
 short time to 120°C
 Colors:silver/yellow
 Features:transfer connect with
 different thread
 More choice:specal length can
 be produced
 such as : ICM-M16/PG11
 Order part noTCM-M16/PG11
 Remarks : not included locknut



型号 Item No.	外螺纹 D1	内螺纹 D2	螺纹长度 L	高度 H	宽度 W	包装 Std.Pkg. pcs
TCM-M/P						
TCM-M12/PG7	M12*1.5	PG7	6.0	8.5	15	10
TCM-M16/PG11	M16*1.5	PG11	6.0	8.5	22	10
TCM-M20/PG13.5	M20*1.5	PG13.5	6.5	9.0	25	10
TCM-M25/PG16	M25*1.5	PG16	7.5	20	26	10
TCM-M32/PG21	M32*1.5	PG21	8.0	10.0	32	10
TCM-M40/PG36	M40*1.5	PG36	9.0	12.5	41	5
TCM-M50/PG42	M50*1.5	PG42	10.0	14	59	5
TCM-P/M						
TCM-PG7/M12	PG7	M12*1.5	6.0	8.5	15	10
TCM-PG9/M16	PG9	M16*1.5	6.0	8.5	19	10
TCM-PG11/M20	PG11	M20*1.5	6.5	8.5	23	10
TCM-PG13.5/M20	PG13.5	M20*1.5	6.5	9.0	25	10
TCM-PG16/M25	PG16	M25*1.5	6.5	9.5	30	10
TCM-PG21/M32	PG21	M32*1.5	7.5	10.0	37	10
TCM-PG29/M40	PG29	M40*1.5	8.0	11.5	45	5
TCM-PG36/M50	PG36	M50*1.5	9.0	12.5	55	5
TCM-PG42/M63	PG42	M63*1.5	10.0	14	68	5
TCM-N/M						
TCM-NPT38/M16	NPT3/8"	M16*1.5	6.5	9.0	20	10
TCM-NPT12/M20	NPT1/2"	M20*1.5	6.5	9.0	24	10
TCM-NPT34/M25	NPT3/4"	M25*1.5	7.5	10.0	29	10
TCM-NPT1/M32	NPT 1"	M32*1.5	8.0	11.5	36	10