



20160103047500

Analyzed by: *Xavier Han* Checked by:

Approved by:



20160103047500

:

1. IEC62321 2013
 - (1) ICP-OES
2. , PBBs() PBDEs() IEC62321 2008
 - (1) -
 - (2) GC-MS PBBs() PBDEs()
- 3.HBCDD, DBP BBP, DEHP, DIDP,DINP, DNOP, DPP DIBP EPA 3550C
 - (1) GC-MS HBCDD, DBP BBP, DEHP, DIDP,DINP, DNOP, DPP DIBP



20160103047500

	-	mg/kg	5	ND
	-	mg/kg	5	ND
	-	mg/kg	5	ND
	-	mg/kg	5	ND
			<u>MDL</u>	
	-	mg/kg	5	ND
	-	mg/kg	5	ND
	-	mg/kg	5	ND
	-	mg/kg	5	ND
	-	mg/kg	5	ND
HBCDD		mg/kg	5	ND
DBP		%	0.003	ND
BBP		%	0.003	ND
DEHP		%	0.003	ND
(DIBP)**		%	0.003	ND
DIDP		%	0.003	ND
DINP		%	0.003	ND
DNOP		%	0.003	ND
(DPP)**		%	0.003	ND

- (1) RoHS 2011/65/EU II.
- (2) 1 mg/kg = 1 ppm = 0.0001%
- (3) MDL =
- (4) ND = <MDL
- (5) - =
- (6) ** CNAS .



20160103047500

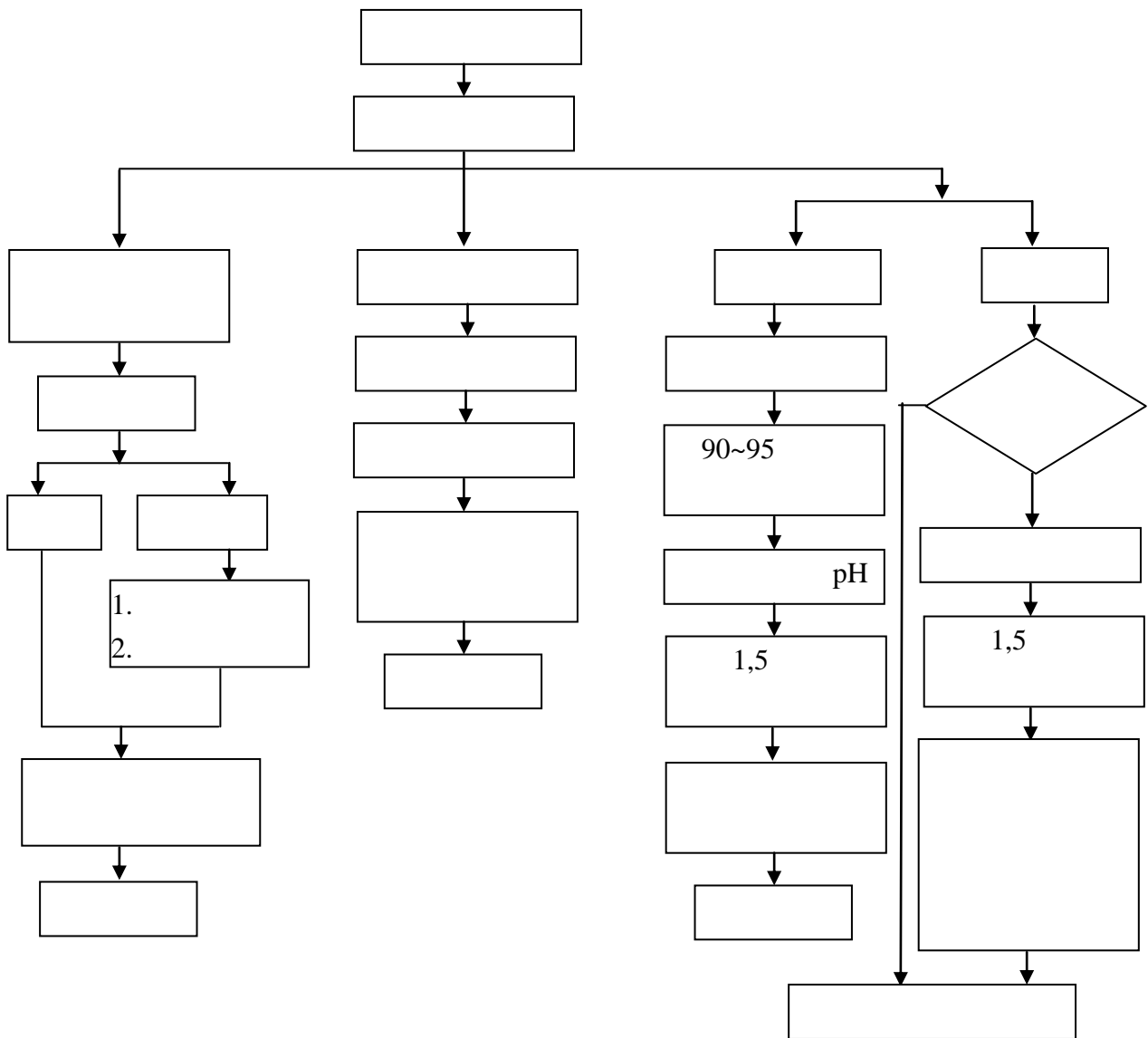
:

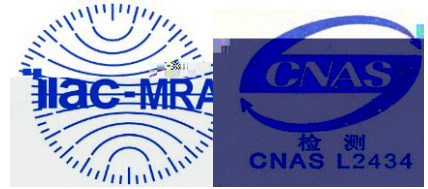
	EN 14582:2007	IC	MDL	
(Cl)		mg/kg	30	ND
(Br)		mg/kg	30	ND

- (1) 1 mg/kg = 1 ppm = 0.0001%
- (2) MDL =
- (3) ND = <MDL

20160103047500

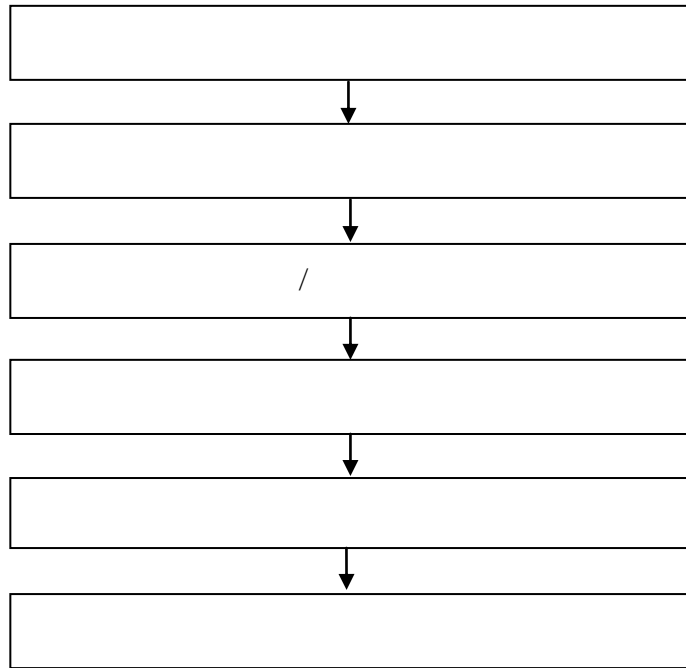
RoHS

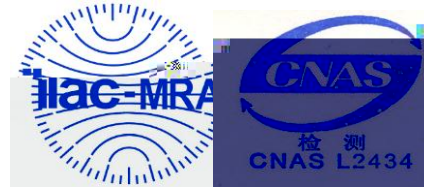




20160103047500

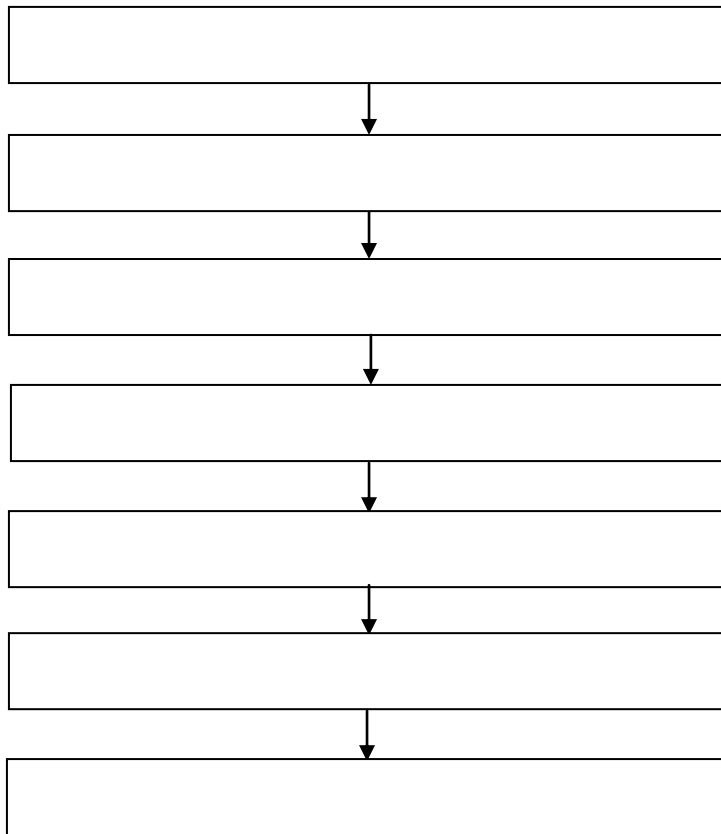
/





20160103047500

Halogen





20160103047500

