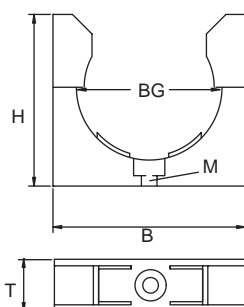


## RCCN 日成BGH型固定支架 Tubing Clamp Without Cover



产品材质:采用尼龙66/防火等级94V-2  
颜色种类:黑色.灰色  
工作温度:-40°C至105°C  
产品特性:用于固定各种软管或线缆等



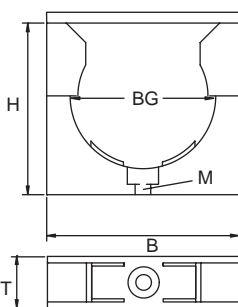
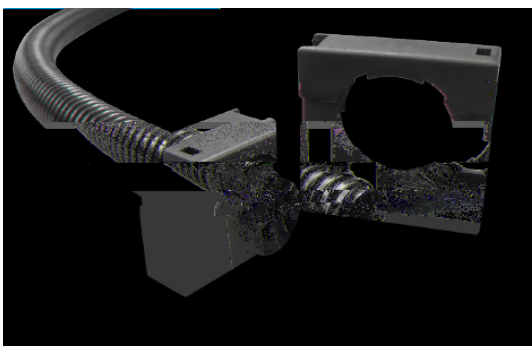
Material: Nylon 66/94V-2  
Color: Black.gray  
Work temperature:-40°C to 105°C  
Features: Suitable to different conduits and cables

Ral9005 Ral7037

单位/Unit:mm

型号 Item No.		对应日成软管型号 Suit to RCCN conduit item no	软管或电缆外径 Conduit or cable outer dia	宽度 Width B	高度 Height H	厚度 Thickness T	螺丝孔 Thickness M	包装 Packing pcs
黑色 Black	灰色 Gray	BG						
BGH-07B	BGH-07G	BG-07	10.0	30	23	12.5	M4	100
BGH-10B	BGH-10G	BG-10	13.0	30	23	12.5	M4	100
BGH-12B	BGH-12G	BG-12	15.8	30	23	12.2	M4	100
BGH-15B	BGH-15G	BG-15	18.5	35	30	13.5	M5	50
BGH-17B	BGH-17G	BG-17	21.2	35	30	15.0	M5	50
BGH-20B	BGH-20G	BG-20	25.0	42	38	16.0	M6	25
BGH-23B	BGH-23G	BG-23	28.5	42	38	16.0	M6	25
BGH-25B	BGH-25G	BG-25	31.5	51	43	16.0	M6	25
BGH-29B	BGH-29G	BG-29	34.5	51	43	16.0	M6	25
BGH-36B	BGH-36G	BG-36	42.5	61	51	16.0	M6	10
BGH-48B	BGH-48G	BG-48	54.5	74	64	19.0	M6	10

## RCCN 日成BGS型带盖固定座 Tubing Clamp With Cover



产品材质:采用尼龙66/防火等级94V-2  
颜色种类:黑色.灰色  
工作温度:-40°C至105°C  
产品特性:用于固定各种软管或线缆等



Material: Nylon 66/94V-2  
Color: Black.gray  
Work temperature:-40°C to 105°C  
Features: Suitable to different conduits and cables

Ral9005 Ral7037

单位/Unit:mm

型号 Item No.		对应日成软管型号 Suit to RCCN conduit item no	软管或电缆外径 Conduit or cable outer dia	宽度 Width B	高度 Height H	厚度 Thickness T	螺丝孔 Thickness M	包装 Packing pcs
黑色 Black	灰色 Gray	BG						
BGS-07B	BGS-07G	BG-07	10.0	30	26	12.5	M4	100
BGS-10B	BGS-10G	BG-10	13.0	30	26	12.5	M4	100
BGS-12B	BGS-12G	BG-12	15.8	30	26	12.2	M4	100
BGS-15B	BGS-15G	BG-15	18.5	35	33	13.5	M5	50
BGS-17B	BGS-17G	BG-17	21.2	35	33	15.0	M5	50
BGS-20B	BGS-20G	BG-20	25.0	42	43	16.0	M6	25
BGS-23B	BGS-23G	BG-23	28.5	42	43	16.0	M6	25
BGS-25B	BGS-25G	BG-25	31.5	51	46	16.5	M6	25
BGS-29B	BGS-29G	BG-29	34.5	51	46	16.5	M6	25
BGS-36B	BGS-36G	BG-36	42.5	61	55	19.0	M6	10
BGS-48B	BGS-48G	BG-48	54.5	74	69	19.0	M6	10