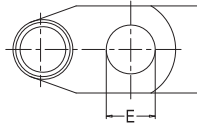
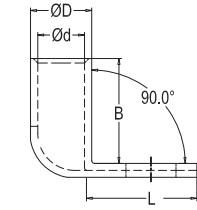


日成 铜管端子

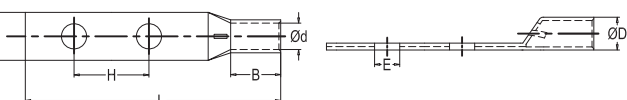
无孔直角



| 型号           | 尺寸 DIMENSION |      |      |      |      |      |
|--------------|--------------|------|------|------|------|------|
|              |              | φ    | φ    |      |      |      |
| HUP90-35/6   | 6.4          | 12.0 | 8.5  | 17.0 | 24.0 | 28.5 |
| HUP90-35/8   | 8.5          | 12.0 | 8.5  | 17.0 | 24.0 | 34.0 |
| HUP90-35/10  | 10.5         | 12.0 | 8.5  | 20.0 | 24.0 | 34.0 |
| HUP90-35/12  | 13.0         | 12.0 | 8.5  | 22.0 | 24.0 | 40.5 |
| HUP90-50/6   | 6.4          | 14.0 | 10.0 | 20.0 | 28.5 | 37.0 |
| HUP90-50/8   | 8.4          | 14.0 | 10.0 | 20.0 | 28.5 | 40.5 |
| HUP90-50/10  | 10.5         | 14.0 | 10.0 | 20.0 | 28.5 | 40.5 |
| HUP90-50/12  | 13.0         | 14.0 | 10.0 | 23.0 | 28.5 | 42.5 |
| HUP90-50/16  | 17.0         | 14.0 | 10.0 | 28.0 | 28.5 | 50.5 |
| HUP90-70/8   | 8.5          | 16.5 | 12.0 | 24.0 | 31.0 | 43.0 |
| HUP90-70/10  | 10.5         | 16.5 | 12.0 | 24.0 | 31.0 | 43.0 |
| HUP90-70/12  | 13.0         | 16.5 | 12.0 | 24.0 | 31.0 | 44.5 |
| HUP90-70/16  | 17.0         | 16.5 | 12.0 | 28.0 | 31.0 | 53.0 |
| HUP90-70/20  | 21.0         | 16.5 | 12.0 | 30.0 | 31.0 | 59.0 |
| HUP90-95/8   | 8.5          | 18.0 | 13.5 | 26.0 | 35.0 | 44.5 |
| HUP90-95/10  | 10.5         | 18.0 | 13.5 | 26.0 | 35.0 | 44.5 |
| HUP90-95/12  | 13.0         | 18.0 | 13.5 | 26.0 | 35.0 | 46.5 |
| HUP90-95/16  | 17.0         | 18.0 | 13.5 | 28.0 | 35.0 | 52.0 |
| HUP90-95/20  | 21.0         | 18.0 | 13.5 | 30.5 | 35.0 | 59.0 |
| HUP90-120/10 | 10.5         | 19.5 | 15.0 | 29.0 | 35.5 | 49.0 |
| HUP90-120/12 | 13.0         | 19.5 | 15.0 | 29.0 | 35.5 | 49.0 |
| HUP90-120/16 | 17.0         | 19.5 | 15.0 | 29.0 | 35.5 | 55.0 |
| HUP90-120/20 | 21.0         | 19.5 | 15.0 | 30.5 | 35.5 | 61.0 |
| HUP90-150/10 | 10.5         | 21.0 | 16.5 | 31.0 | 40.0 | 48.0 |
| HUP90-150/12 | 13.0         | 21.0 | 16.5 | 31.0 | 40.0 | 51.0 |
| HUP90-150/16 | 17.0         | 21.0 | 16.5 | 31.0 | 40.0 | 56.0 |
| HUP90-150/20 | 21.0         | 21.0 | 16.5 | 34.0 | 40.0 | 61.5 |
| HUP90-185/12 | 13.0         | 24.0 | 19.0 | 35.0 | 46.0 | 58.5 |
| HUP90-185/16 | 17.0         | 24.0 | 19.0 | 35.0 | 46.0 | 58.5 |
| HUP90-185/20 | 21.0         | 24.0 | 19.0 | 35.0 | 46.0 | 65.0 |
| HUP90-240/12 | 13.0         | 26.0 | 21.0 | 40.0 | 50.0 | 54.0 |
| HUP90-240/16 | 17.0         | 26.0 | 21.0 | 40.0 | 50.0 | 60.0 |
| HUP90-240/20 | 21.0         | 26.0 | 21.0 | 40.0 | 50.0 | 67.8 |
| HUP90-300/12 | 13.0         | 29.5 | 23.5 | 43.0 | 59.0 | 74.5 |
| HUP90-300/16 | 17.0         | 29.5 | 23.5 | 43.0 | 59.0 | 64.0 |
| HUP90-300/20 | 21.0         | 29.5 | 23.5 | 43.0 | 59.0 | 70.5 |
| HUP90-400/12 | 13.0         | 34.0 | 27.0 | 49.0 | 62.0 | 79.0 |
| HUP90-400/16 | 17.0         | 34.0 | 27.0 | 49.0 | 62.0 | 68.5 |
| HUP90-400/20 | 21.0         | 34.0 | 27.0 | 49.0 | 62.0 | 75.0 |

| 型号          | 尺寸 DIMENSION |      |     |      |      |      |
|-------------|--------------|------|-----|------|------|------|
|             |              | φ    | φ   |      |      |      |
| HUP90-6/5   | 5.3          | 6.5  | 3.5 | 10.0 | 14.0 | 22.5 |
| HUP90-6/6   | 6.4          | 6.5  | 3.5 | 12.0 | 14.0 | 24.0 |
| HUP90-6/8   | 8.5          | 6.5  | 3.5 | 15.0 | 14.0 | 27.5 |
| HUP90-6/10  | 10.5         | 6.5  | 3.5 | 16.0 | 14.0 | 29.5 |
| HUP90-10/5  | 5.3          | 7.0  | 4.5 | 12.0 | 16.0 | 23.0 |
| HUP90-10/6  | 6.4          | 7.0  | 4.5 | 12.0 | 16.0 | 24.0 |
| HUP90-10/8  | 8.5          | 7.0  | 4.5 | 15.0 | 16.0 | 28.0 |
| HUP90-10/10 | 10.5         | 7.0  | 4.5 | 18.0 | 16.0 | 29.5 |
| HUP90-16/5  | 5.3          | 8.5  | 5.5 | 12.0 | 20.0 | 22.5 |
| HUP90-16/6  | 6.4          | 8.5  | 5.5 | 14.0 | 20.0 | 24.0 |
| HUP90-16/8  | 8.5          | 8.5  | 5.5 | 15.0 | 20.0 | 28.0 |
| HUP90-16/10 | 10.5         | 8.5  | 5.5 | 18.0 | 20.0 | 31.0 |
| HUP90-16/12 | 13.0         | 8.5  | 5.5 | 19.0 | 20.0 | 32.0 |
| HUP90-25/6  | 6.4          | 10.0 | 6.9 | 15.0 | 21.0 | 27.5 |
| HUP90-25/8  | 8.4          | 10.0 | 6.9 | 16.0 | 21.0 | 32.5 |
| HUP90-25/10 | 10.5         | 10.0 | 6.9 | 18.0 | 21.0 | 32.5 |
| HUP90-25/12 | 13.0         | 10.0 | 6.9 | 19.0 | 21.0 | 34.0 |

日成 铜管端子



| 型号       | 尺寸 DIMENSION |      |      |      |      |       |
|----------|--------------|------|------|------|------|-------|
|          |              | φ    | φ    |      |      |       |
| AD38-8   | 9.0          | 11.7 | 9.5  | 17.5 | 12.5 | 65.8  |
| AD60-10  | 11.0         | 14.4 | 11.9 | 21.3 | 14.5 | 74.7  |
| AD80-10  | 11.0         | 17.9 | 14.9 | 26.7 | 19.5 | 82.3  |
| AD100-10 | 11.0         | 20.1 | 16.8 | 29.7 | 19.5 | 86.6  |
| AD125-10 | 11.0         | 21.3 | 17.8 | 32.0 | 19.5 | 89.7  |
| AD150-10 | 11.0         | 23.4 | 19.6 | 35.0 | 22.8 | 94.5  |
| AD185-12 | 14.0         | 25.3 | 21.1 | 37.8 | 23.8 | 117.0 |
| AD200-12 | 14.0         | 27.0 | 22.5 | 40.4 | 24.8 | 119.6 |
| AD250-12 | 14.0         | 30.2 | 25.2 | 45.2 | 26.8 | 120.7 |
| AD325-12 | 14.0         | 33.1 | 27.6 | 49.2 | 36.0 | 130.2 |
| AD400-12 | 14.0         | 38.2 | 31.8 | 56.9 | 40.0 | 136.8 |
| AD500-12 | 14.0         | 42.7 | 35.6 | 63.5 | 43.0 | 147.5 |