



5

5

4

5

4



- ± 5 1 10 24
E24
- ± 10 1 10 12
E12
- ± 20 1 10 6
E6



4.7K

M

K

R

4K7

1R9

2

3

3

4

102

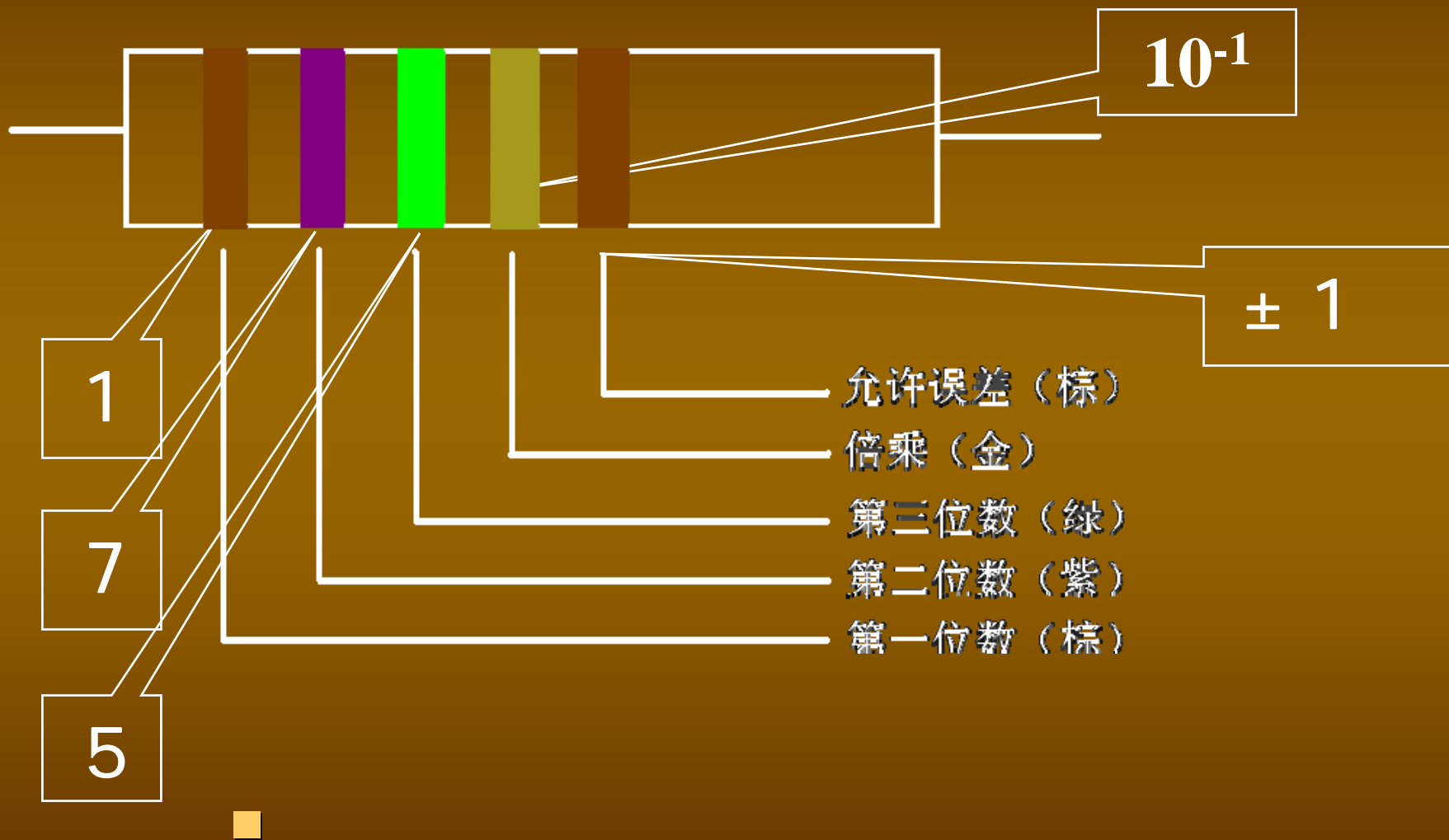
1000

1001

1000

	1	1	10	
	2	2	100	
	3	3	1000	
	4	4	10000	
	5	5	100000	
	6	6	1000000	
	7	7	10000000	
	8	8	100000000	
	9	9	1000000000	
	0	0	1	
			0.1	± 5%
			0.01	± 10%
				± 20%

5



4

10^3

± 5

2

7

允许误差 (金)

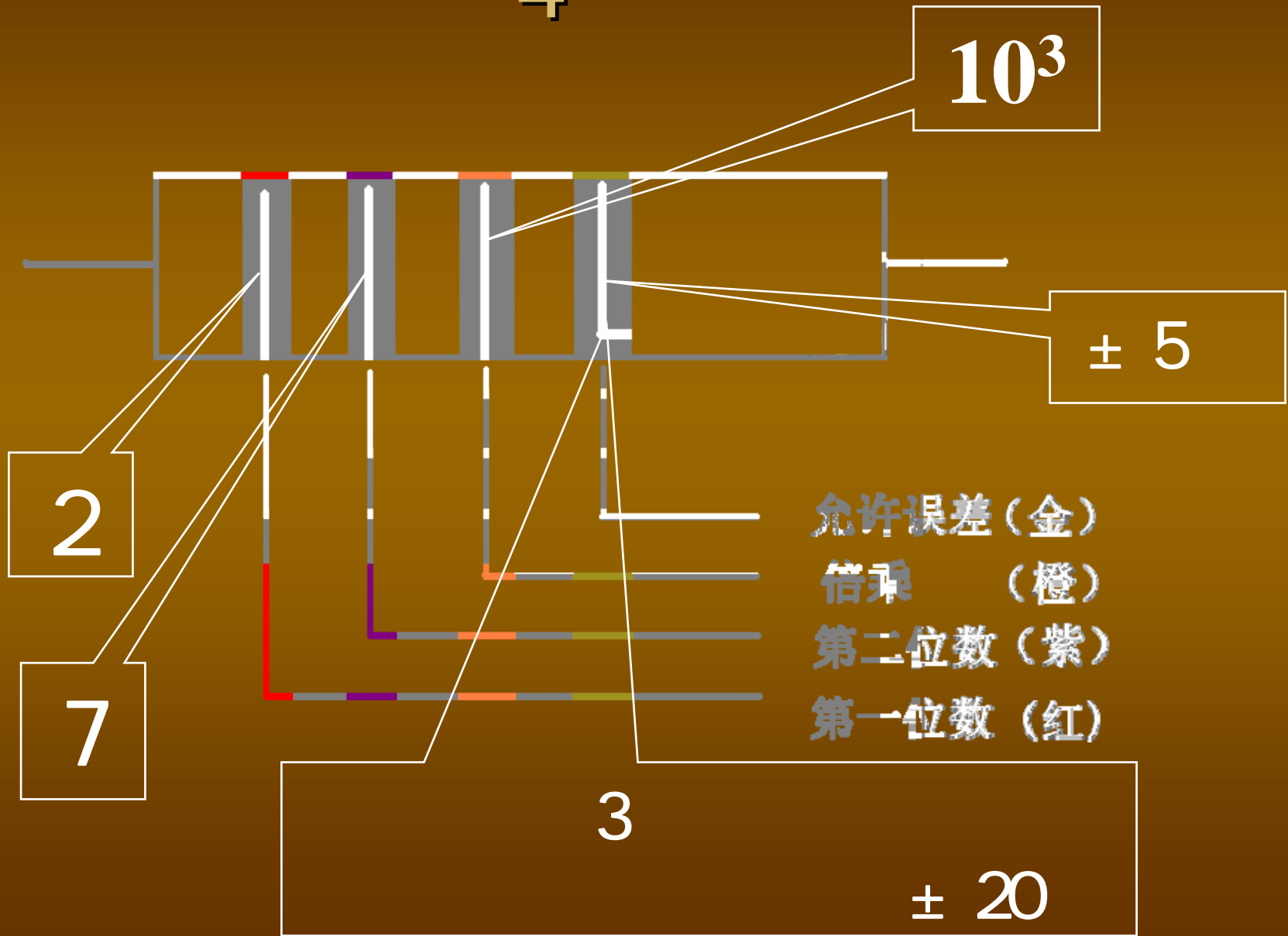
倍乘 (橙)

第二位数 (紫)

第一位数 (红)

3

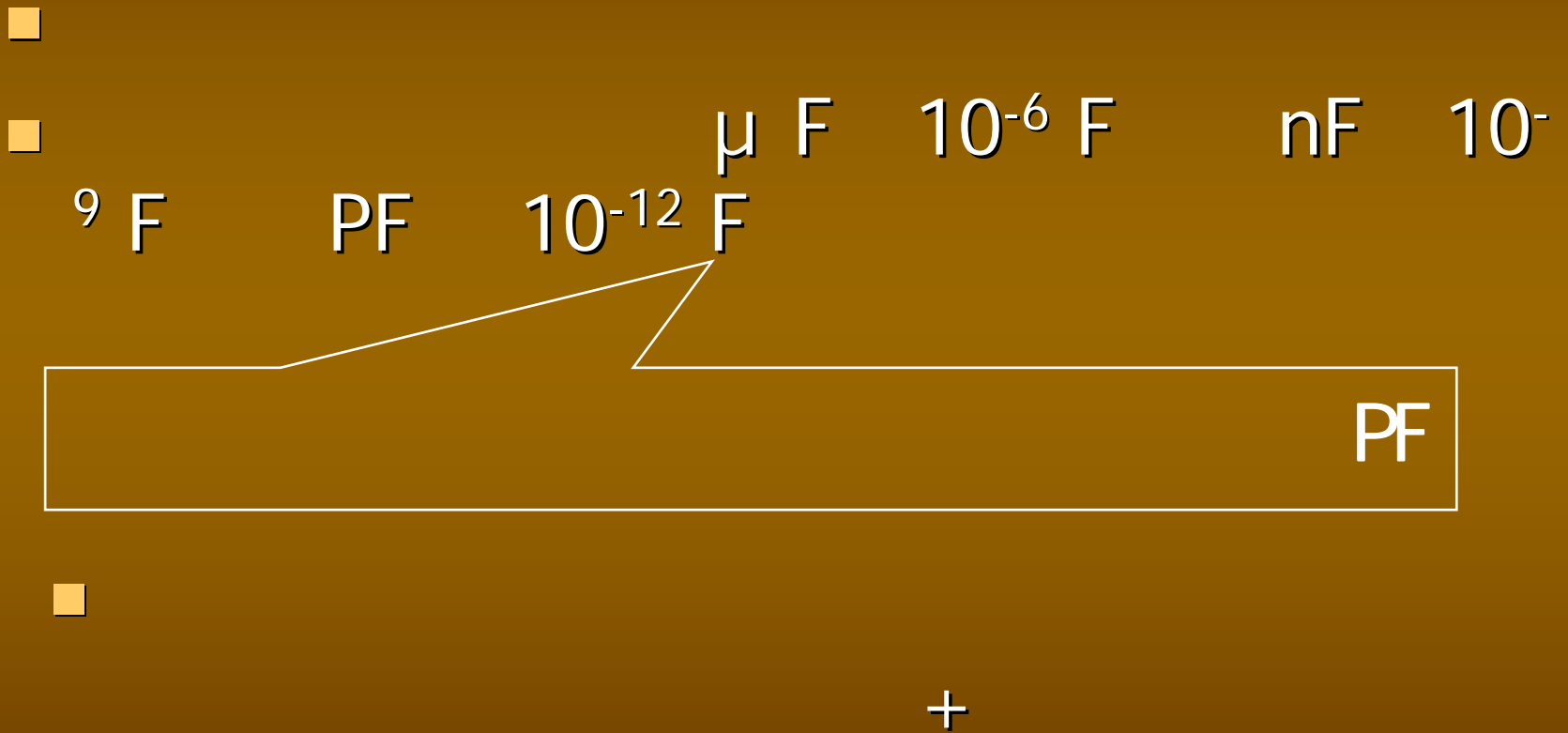
± 20













4.7u/16V

4.7 uF

16V



1

,



2

4

1

m u n p

m

10⁻³F

u

10⁻⁶F



n

10⁻⁹F P

10-12F

33m

33000 u F

47n

0

047 u F

3 u 3

3

3 u F

5n9

5900pF

2P2

R

2

pF

R22

0

22pF

R

■ p n u m

p n u m

4n7

$$4.7 \times 10^{-9} \text{F} = 4700 \text{ pF}$$

■ ()

pF

1

CR

5000pF

0.005uF ~ 1.0uF

4

tg

RS

$$\text{tg} = \text{RS}/\text{XC} = 2 * 3.14 * \text{f} * \text{C} *$$

RS

5

CC1

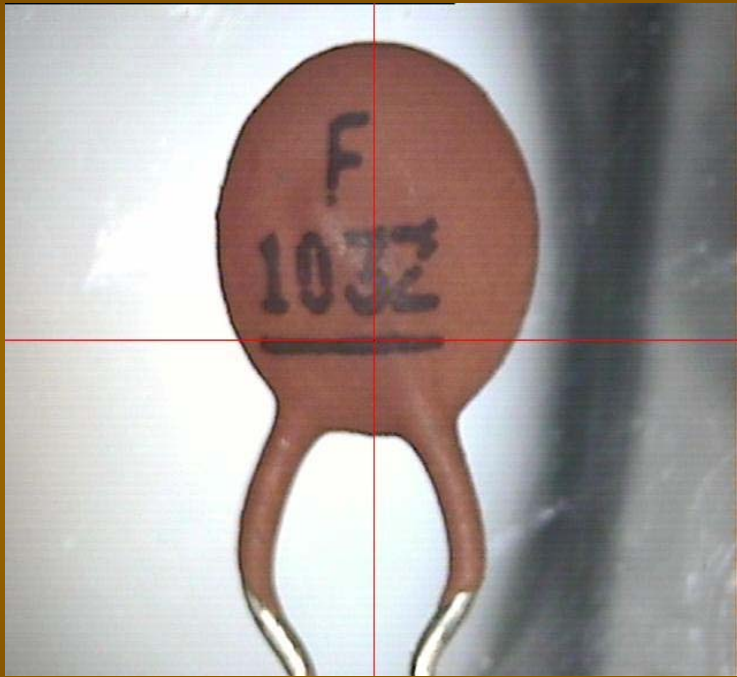
CT1

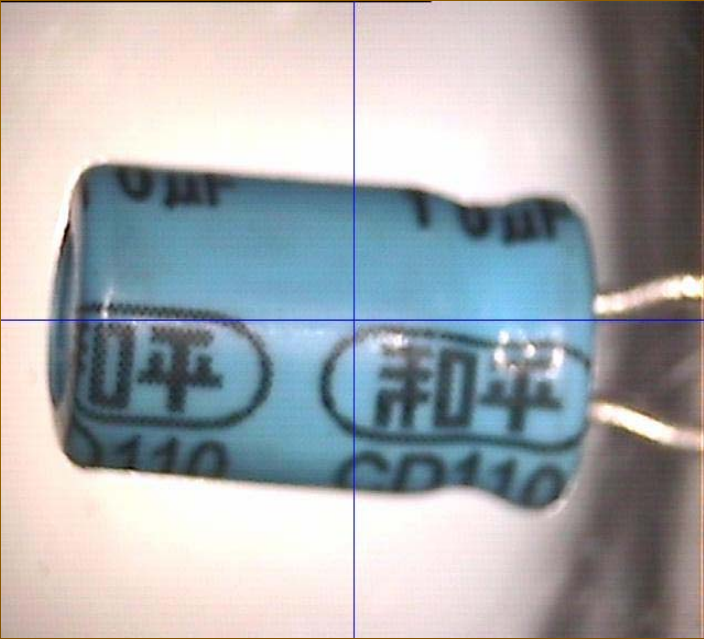
CS1

CC81

CT81

CT7





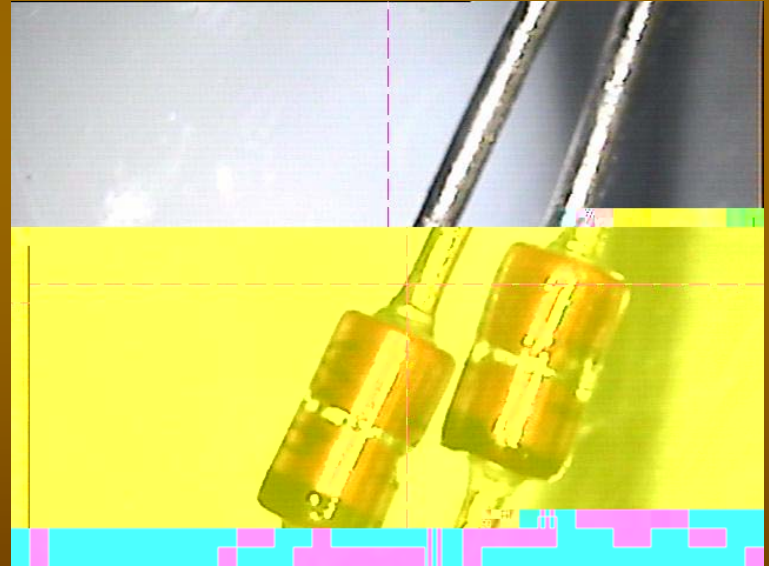
500V

“ ” “ ”

“ ”

“ ”

PN



PN

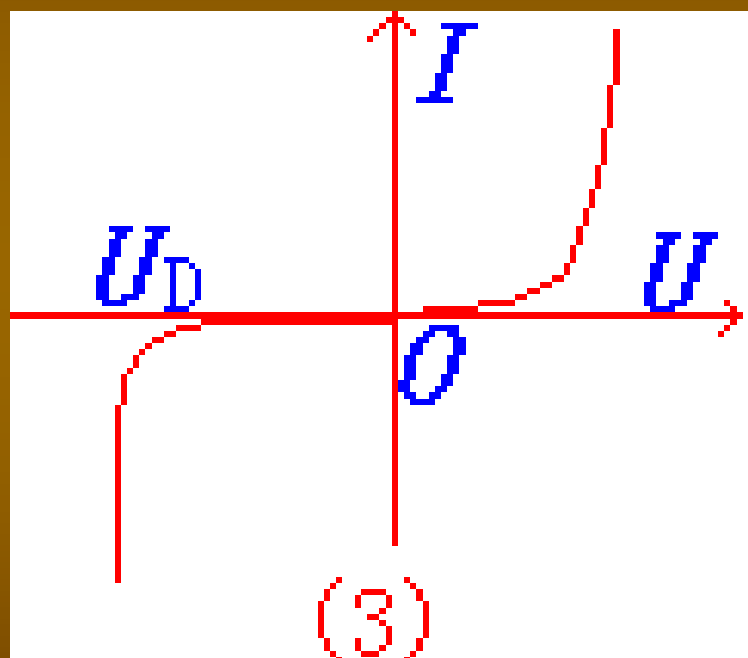
0.1V

0

“

”

0.5V





■ 3

■

■ 4

■

■

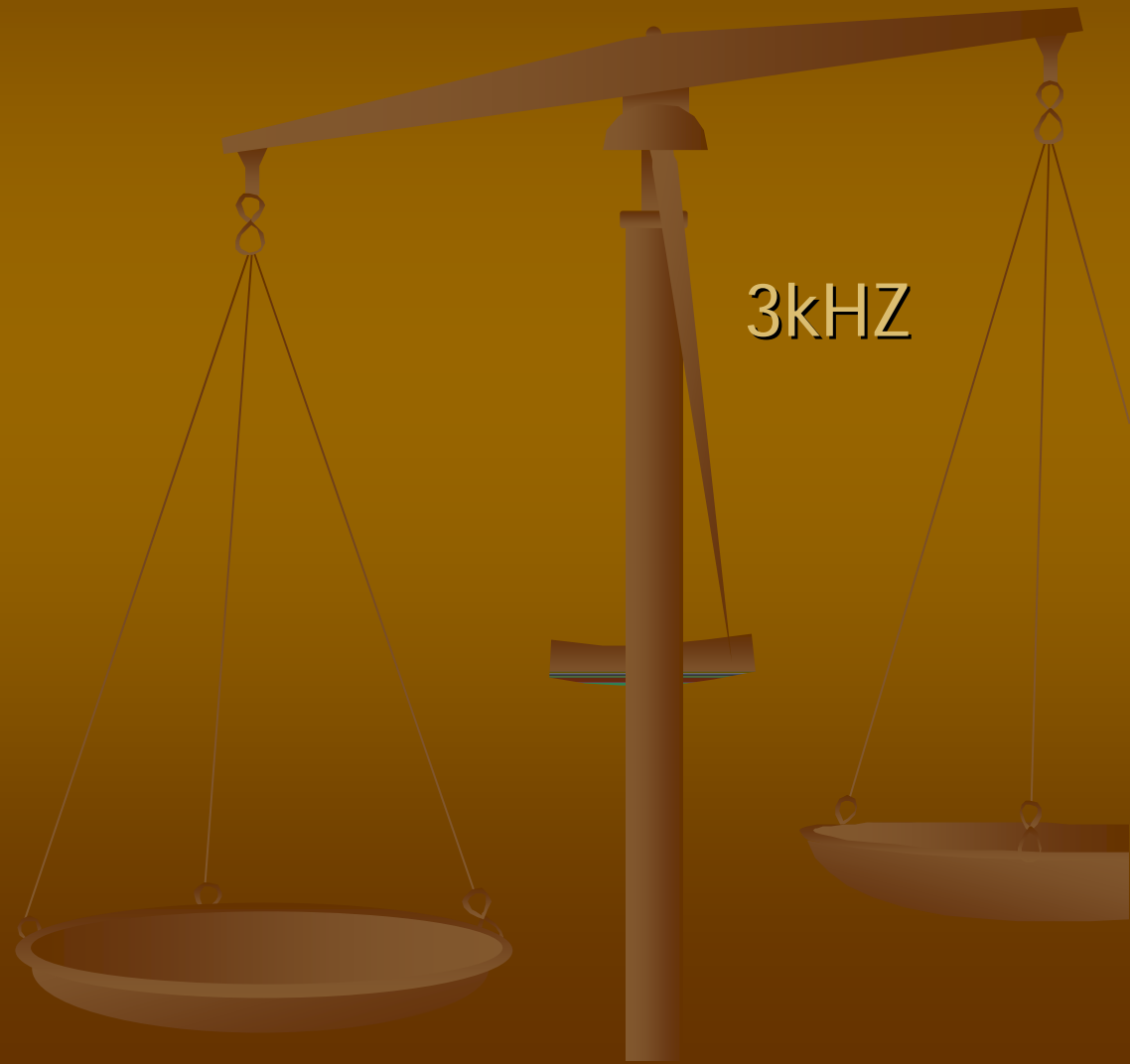


- 1

-

- 2

-



■ 3

■

■ 4

■

2CN2

BS

4



2CW55

2CW56

2CN1



- 6
-

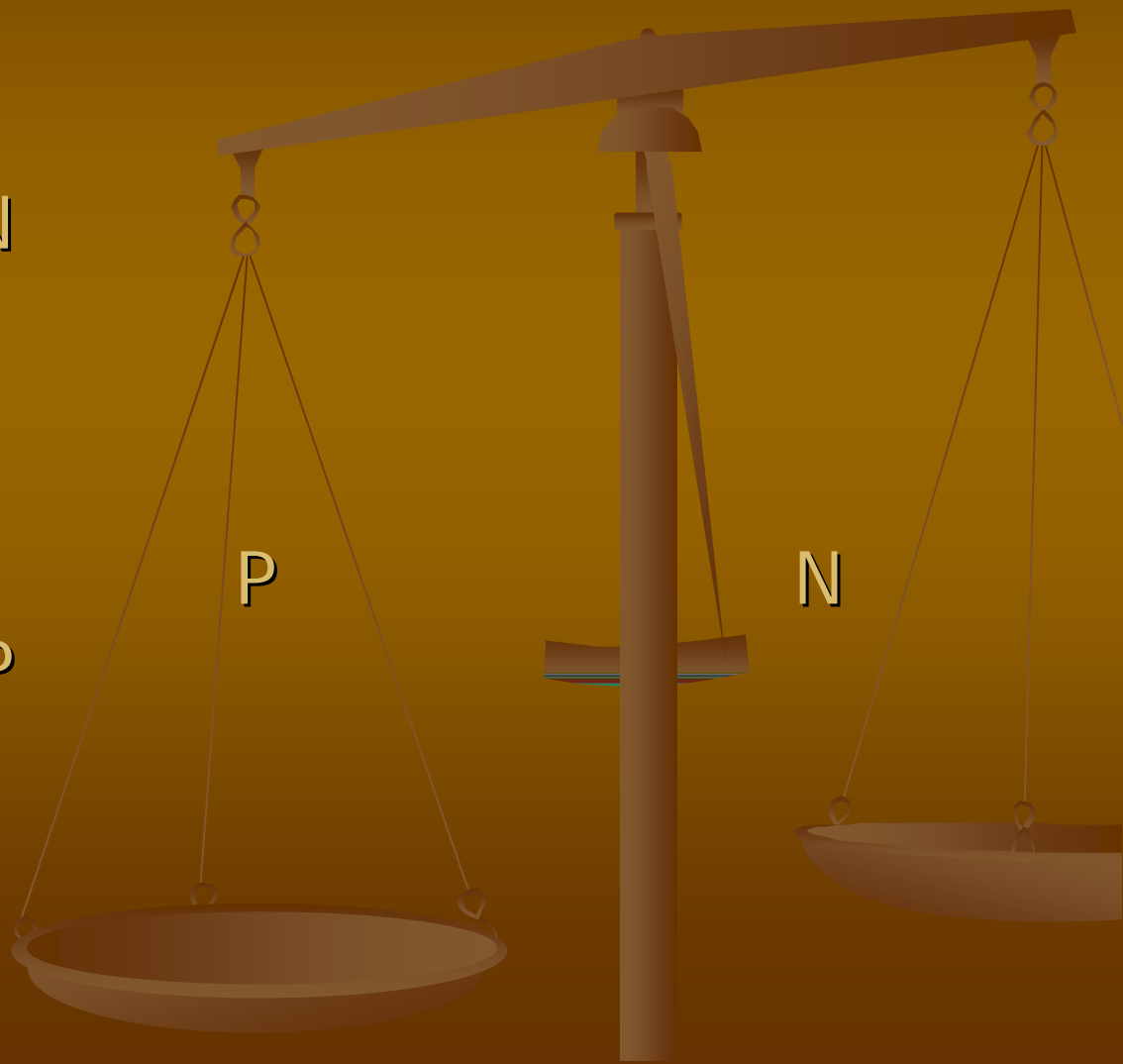
N PN

PN

P

P

N



1

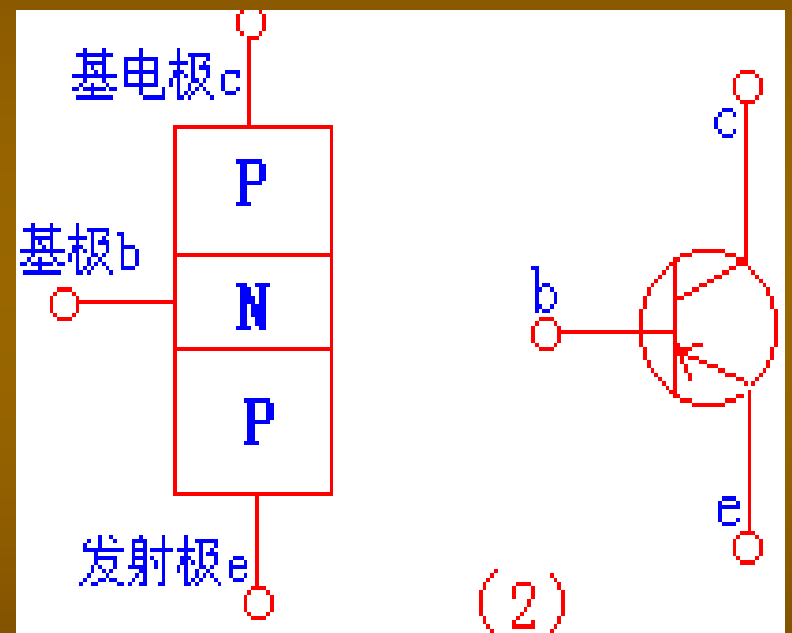
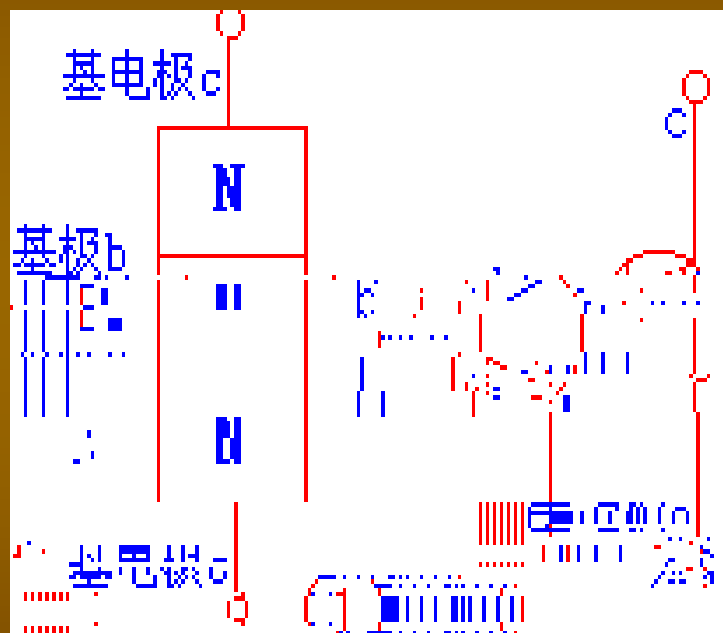
PN

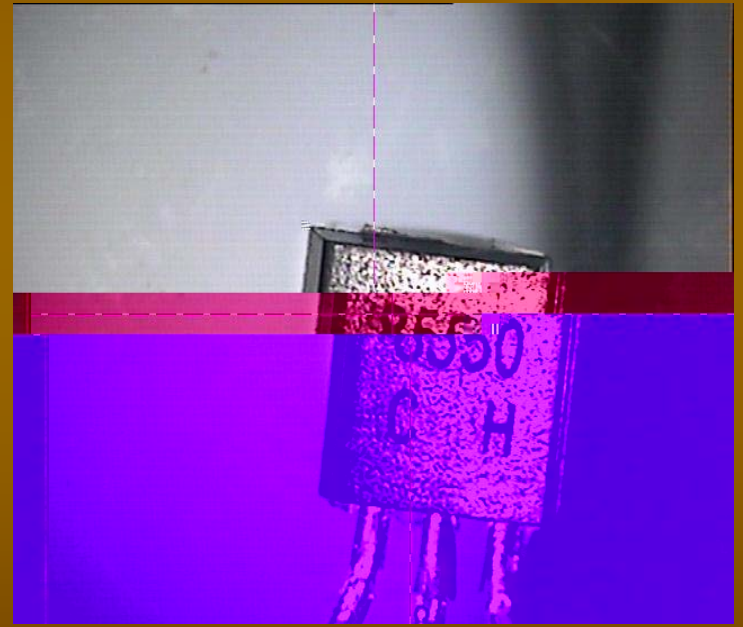
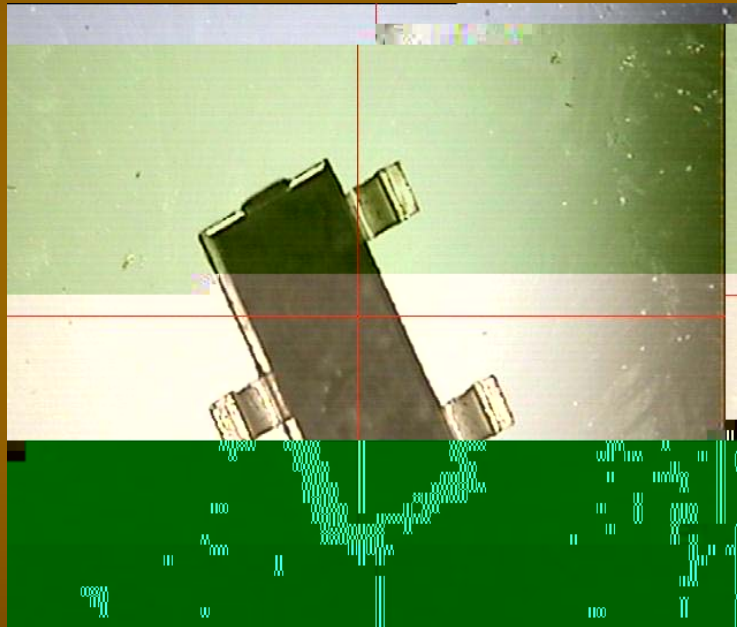
2

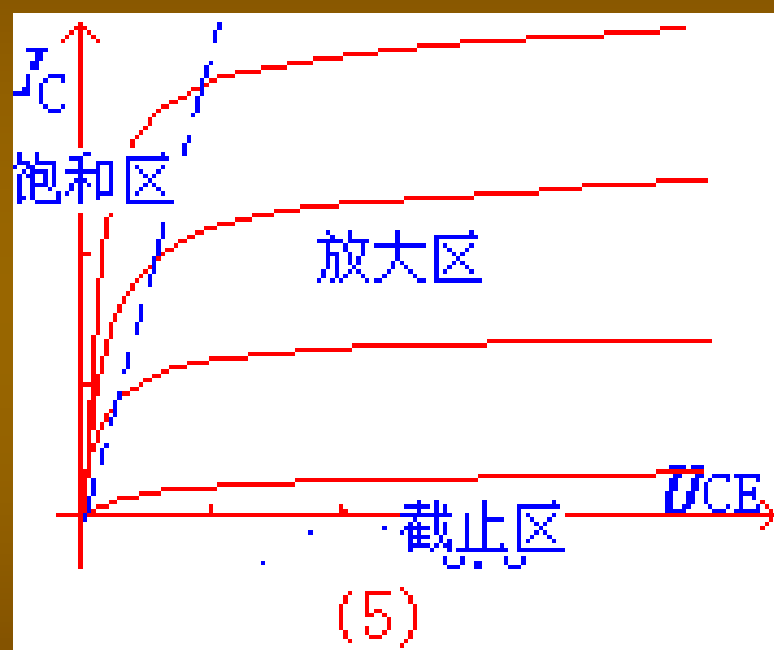
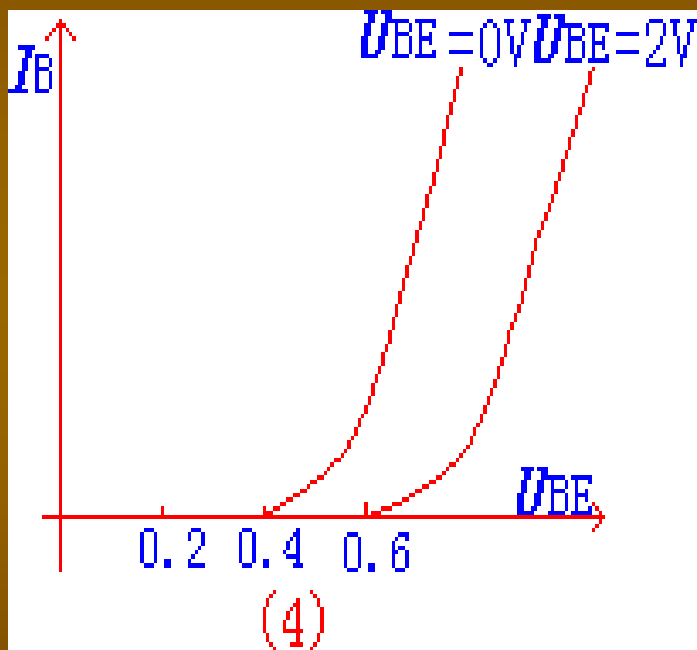
PN

PNP

NPN





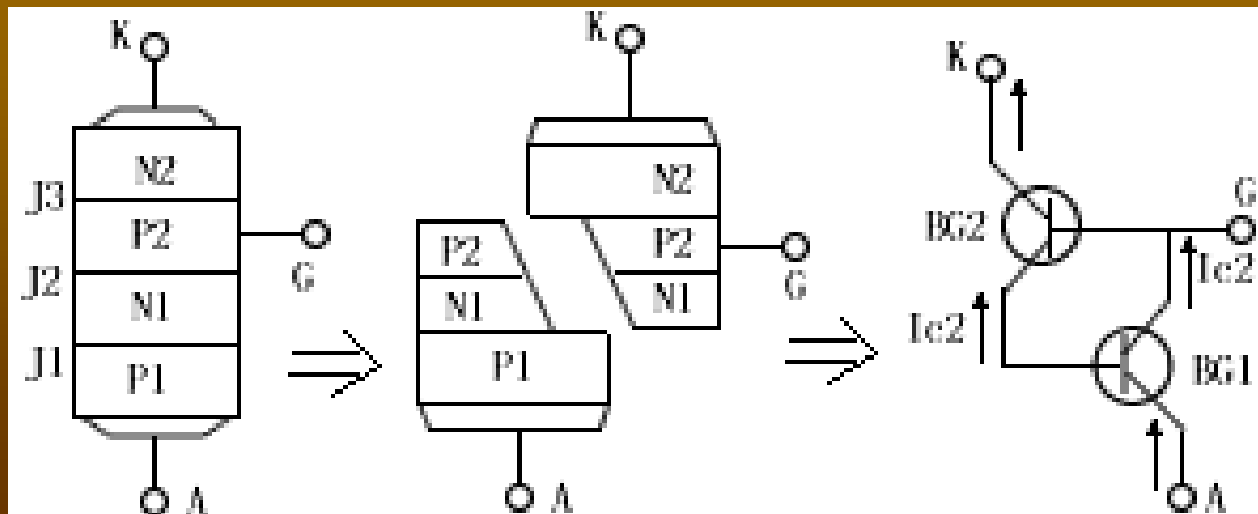


P1N1P2N2

PN

PNP

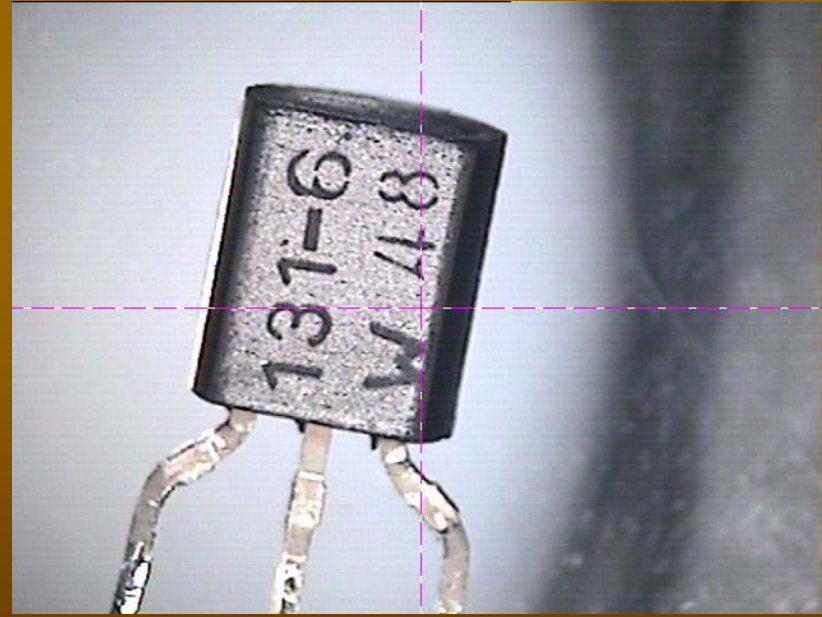
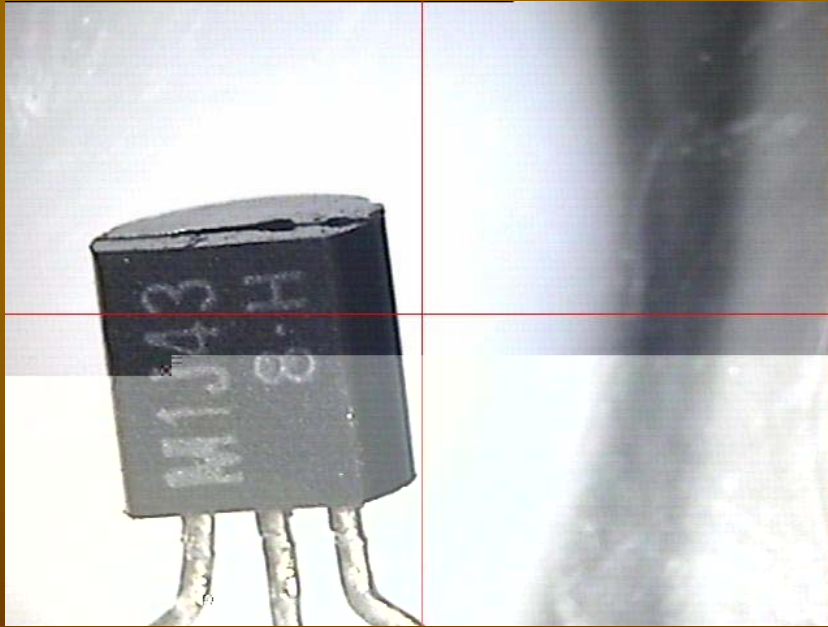
NPN



I_{GT}

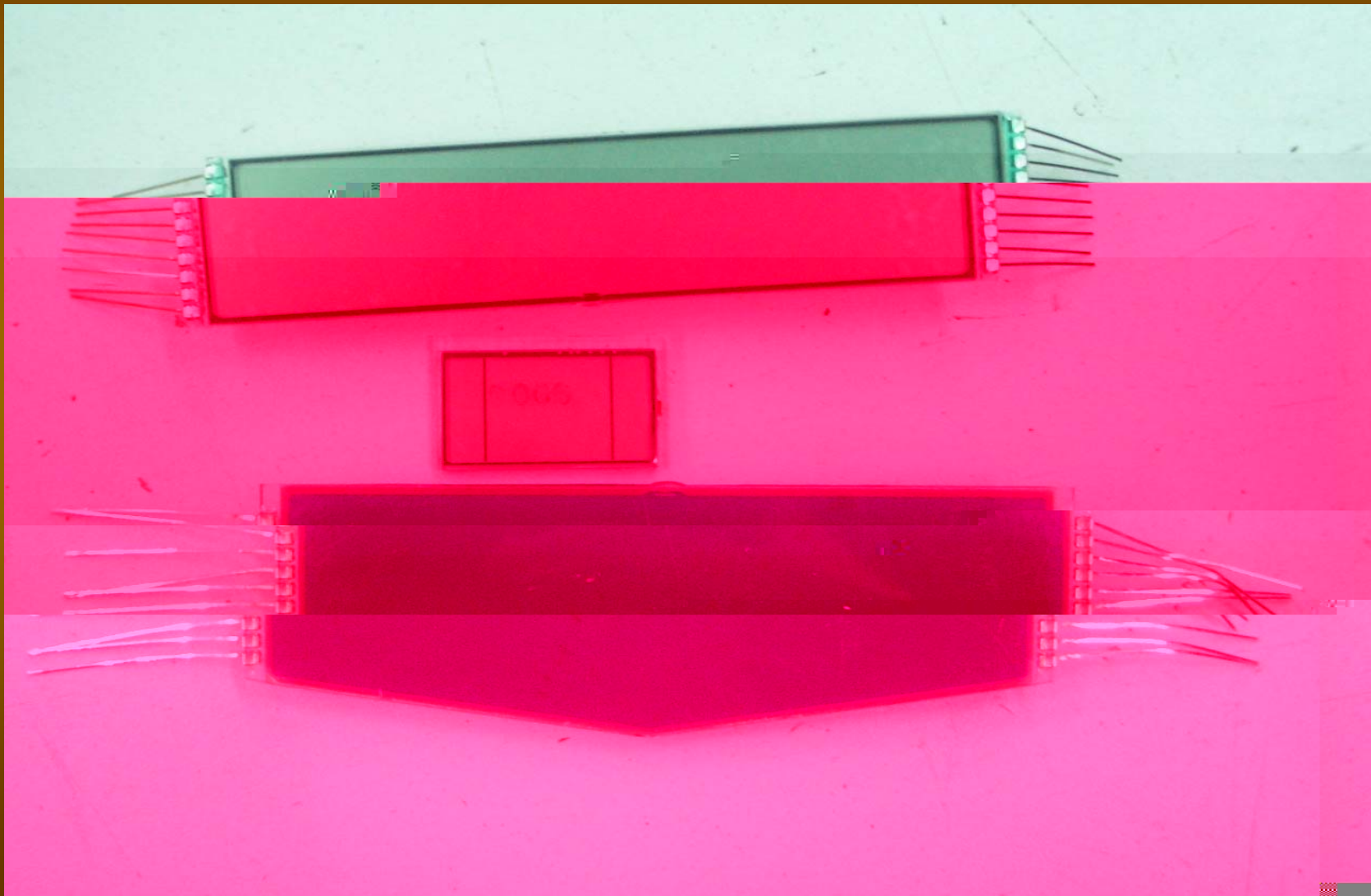
V_{GT}

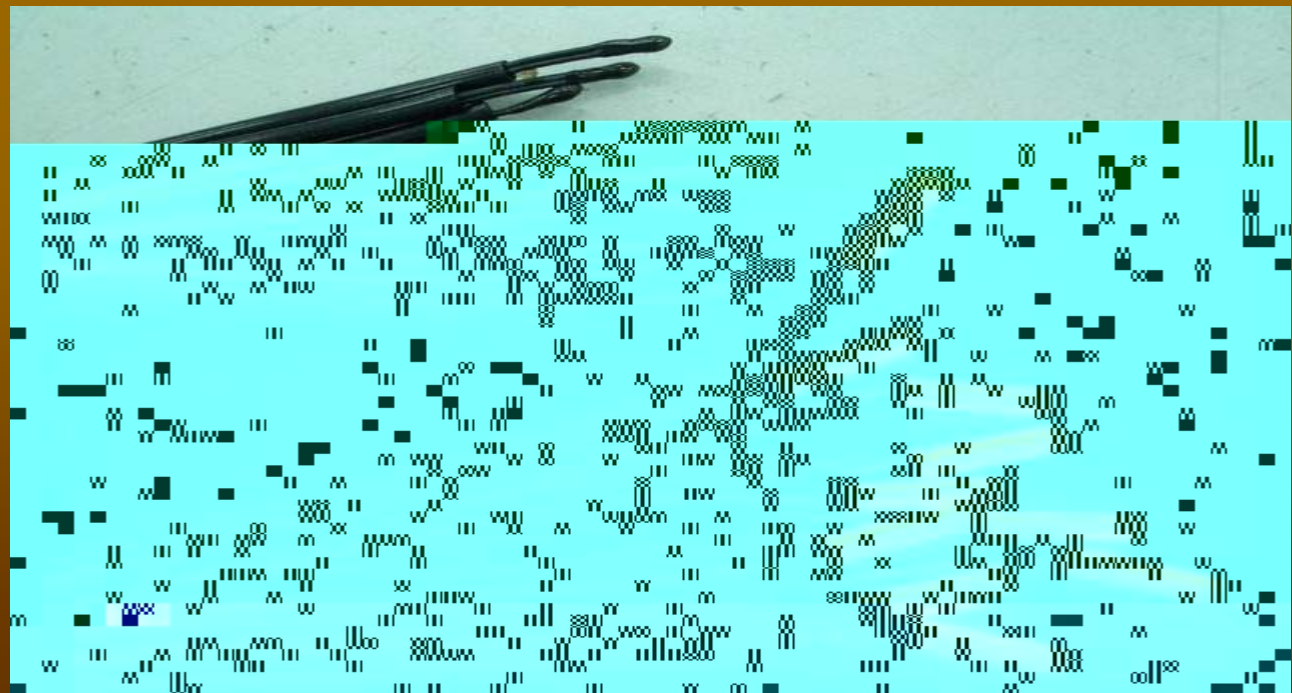
I_H



20

60





- B

- B

- $$B = [T_1 * T_2 / (T_2 - T_1)] * \ln(R_1 / R_2)$$

-

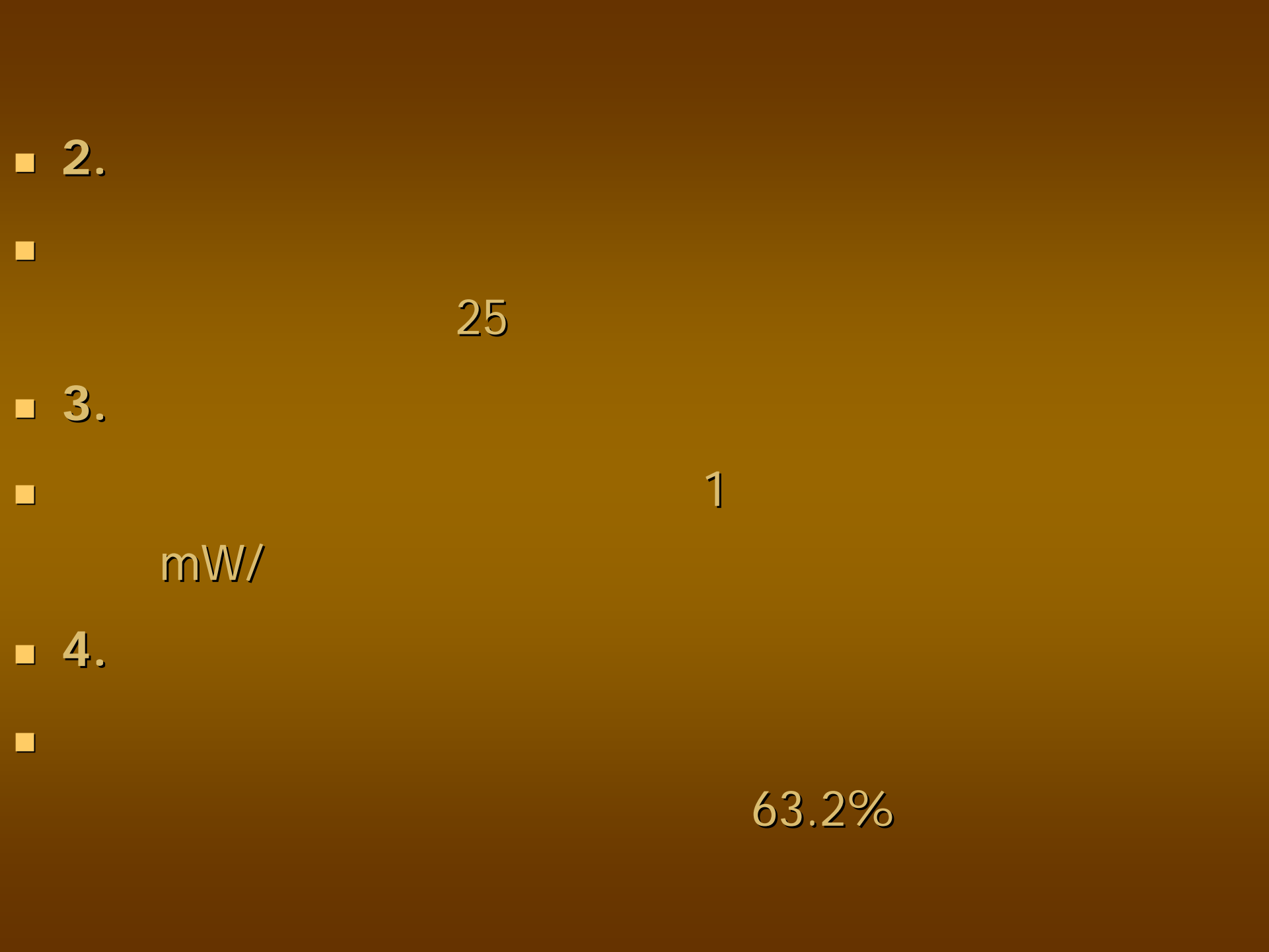
- B----- K

- R₁----- T₁

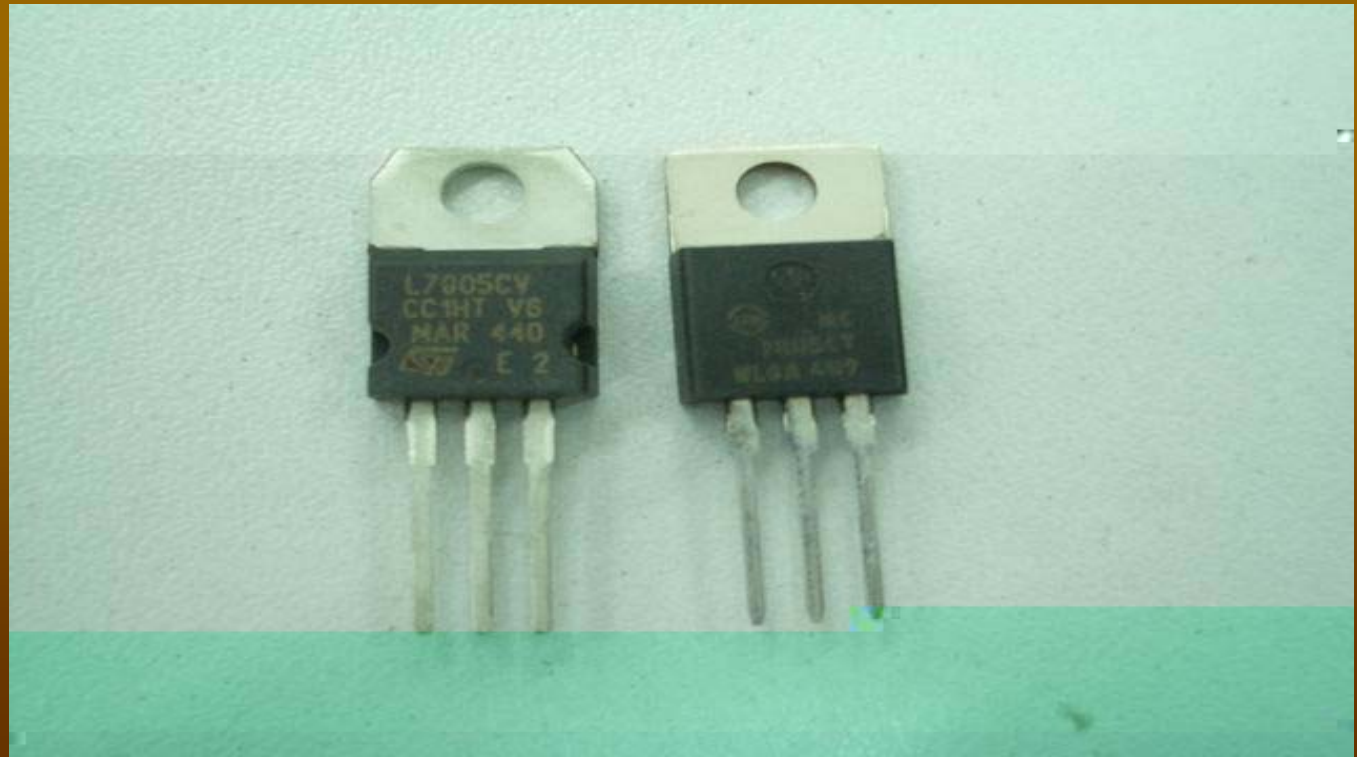
- R₂----- T₂

- T₁----- 298.15K(+25)

- T₂----- 358.15K(+85) 323.15K(50)



7805/7812





()



OMRON
G4A-1A-E-CN
12VDC
20A 250VAC
10Z40

JQX-102F
12VDC
20A 250VAC
1HP 120VAC
2HP 240VAC

891WP-1A-C
12V-DC
25A 250V-
50/60Hz
S0441





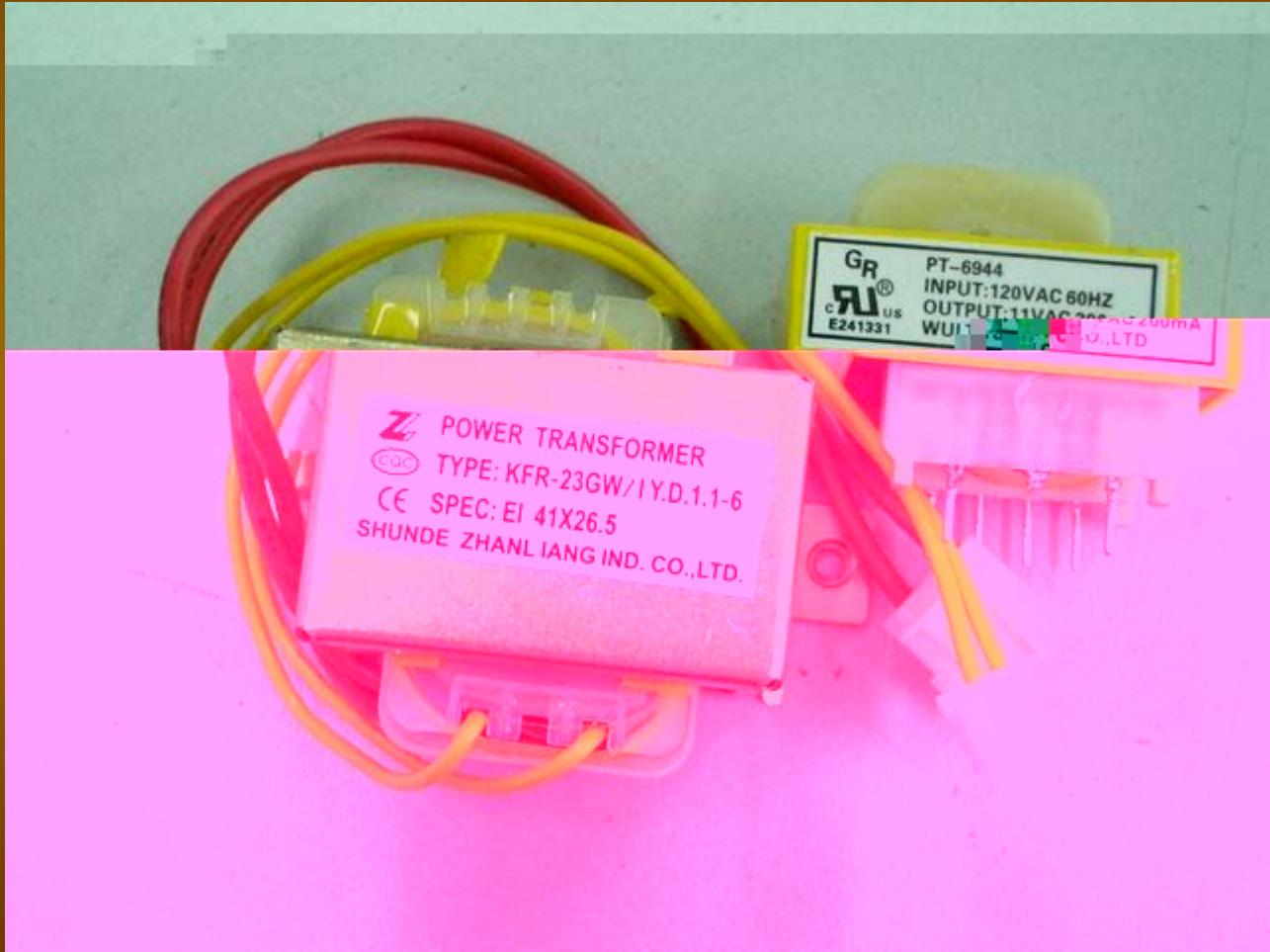
(

)



■ 2

50V



Z POWER TRANSFORMER
TYPE: KFR-23GW/IY.D.1.1-6
CE SPEC: EI 41X26.5
SHUNDE ZHANLIANG IND. CO.,LTD.

GR PT-6944
UL INPUT: 120VAC 60HZ
C US OUTPUT: 11VAC 200mA
E241331 WUI: SHUNDE ZHANLIANG IND. CO.,LTD





□ □ □ - □□ + □□ - □ □ (表示带保护器,用“F”表示,没有保护器可省略)

设计序号,用数字表示

另一组输出:表示同上。只有一组输出可省略不写,
输出线用蓝色

第一组输出:电流以实际电流值缩小 10 倍表示,单位 (mA),如:
350 mA, 即: 35
电压用字母表示如: A: 8.3V, B: 9V, C: 11V, D: 14.5V,
E: 24V, F: 26V, G...
, 输出线用棕色

使用电压:“1”表示 110~120V, 60HZ “2”表示 220~240V, 50/60HZ

安装方式:

F—翻边孔,

T—椭圆耳, K—卡式

C—插针式安装方式

变压器简称:用“T”表示





10^{12} 10^{13} /cm



PTC-S

PTC

VDR





PTC

1.1

■ 25 ± 2 DC1.5V
PTC

□ „1.1

R

PTC

2

表 2 过流动作测试条件

初始电流 (A)	动作电流 (符合产品规格书要求)
额定电流 + 80% (1.04A)	额定电流 (1.0A)
额定电流 (1.0A)	符合产品规格书要求, 且该电流在额定电流

PTC

| R/R | 20%

3

表 3 最大电流测试条件

电压源 V (有效值)	初始电流 A(有效值)	通电时间 (S)	断电时间 (S)	次数
产品规格书要求	产品规格书要求	60	300	10

PTC

| R/R | 20%

4

表 4 最大电压测试条件

最大电压	初始电流 A (有效值)	通电时间 (分钟)	次数
360VAC	产品规格书要求	15	1

PTC

2

90

5

表 5 恢复时间测试条件

电压源 V (有效值)	初始电流 A (有效值)	通电时间 (min)
产品规格书要求	产品规格书要求	10



